

Intraoral camera

# YOUR VIEW. WHERE OTHERS CAN ONLY IMAGINE

Enhancing your workflows  
through innovation

C50



[dhpsupply.com](http://dhpsupply.com) | 800.626.2163

# Remarkable clinical vision



## FULL HD

Clear and detailed images

- A more **confident** final diagnostic
- Increased case **acceptance**

## VISION MODE

Display **natural colors**

- **Straight forward** patient education
- Great for comparing teeth stain and **sharing it with patient**

## AUTO FOCUS

Gain time & **better image clarity**

- **Easy to use**
- Improved **patient comfort**

## MACRO VISION

**Better visibility** of fissures & caries

- **Easier** clinical evaluation
- **Enhanced communication** between clinician and patient

## DEPTH OF FIELD

**5 camera focal views\*** available in **ONE camera**

- **User-friendly** product for an improved procedure
- **Quick switch:** from one position to another **in a second**



\*The 5 camera focal views include macro, portrait, smile, tooth and intraoral

# Everything you need to see

## Unprecedented vision with Daylight mode

- Improved interpretation of tooth shades with rendering of natural colors.
- Powerful support for controlling pathologies, and facilitate treatment follow up



## Exclusive macrovision performance

- High magnification for ultra-precise diagnosis.



## But also...

- Crystal clear vision with greater depth of field.
- A single camera for all shots: macro, intraoral, tooth, smile and portrait.



## Improved patient follow-up

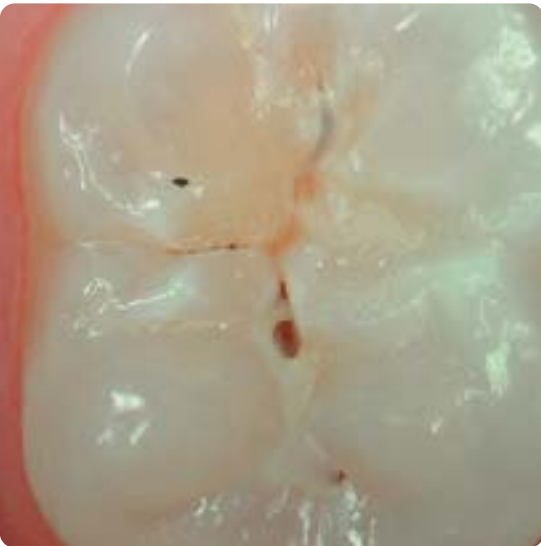
- More information about your patients
- Lasting trust between you and your patients.




# Remarkable clinical versatility

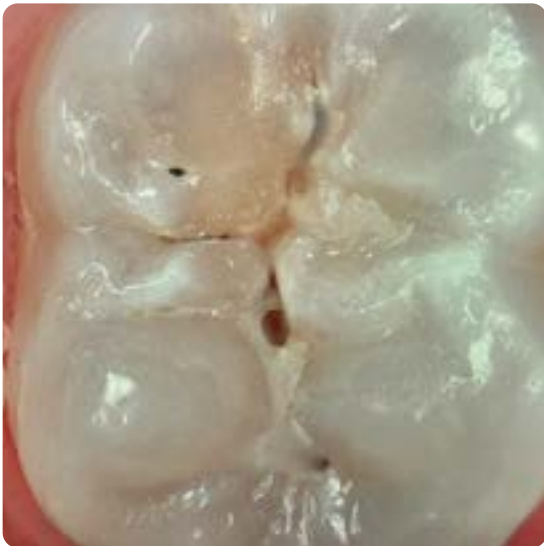
## Vision modes for detailed and reliable diagnoses


### DAYLIGHT MODE



 Record **natural colors** for a better interpretation of tooth shade, pathology identification and patient follow-up.

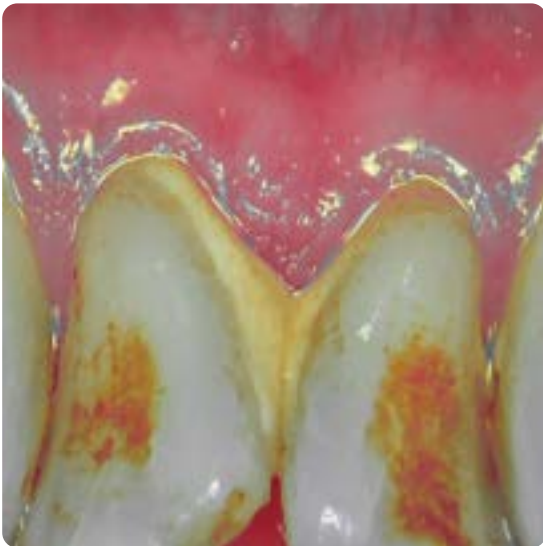
### DAYLIGHT+ MODE




 **High contrast** emphasizing anatomic fissures and details of the dentin structure/depth.

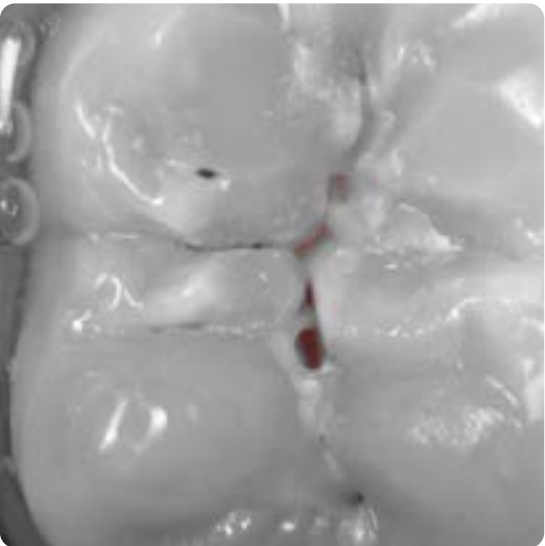
# A versatile camera to diagnose a large range of cases


### PERIO MODE



 Enhancement of **dental plaque, calculus and gingival inflammation** using chromatic amplification.

### CARIES MODE



 Caries **detection with fluorescence LED technology**.

## Camera modes for complete patient follow-up



### Daily dentistry follow-up

**Daylight or Diagnostic-Aid option** helps you visualize anatomical details that are invisible to the naked eye or with a mirror. These modes allow the dentist to show the difference between «before» and «after» care.

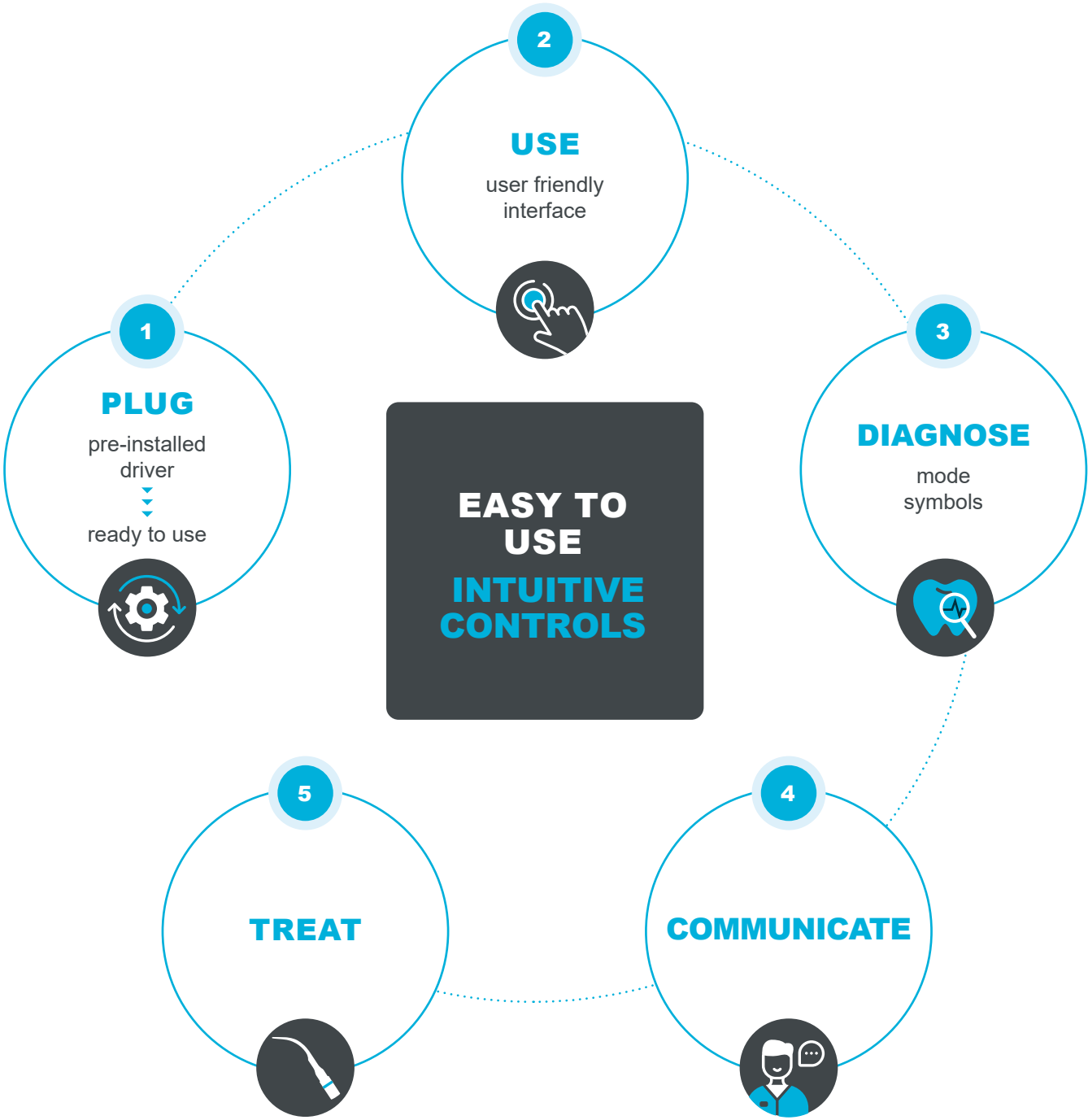


### Orthodontics follow-up

The portrait position turns off the LED light to capture the patient's facial or lateral side, ensuring the best orthodontics follow-up.



# Remarkable operational freedom



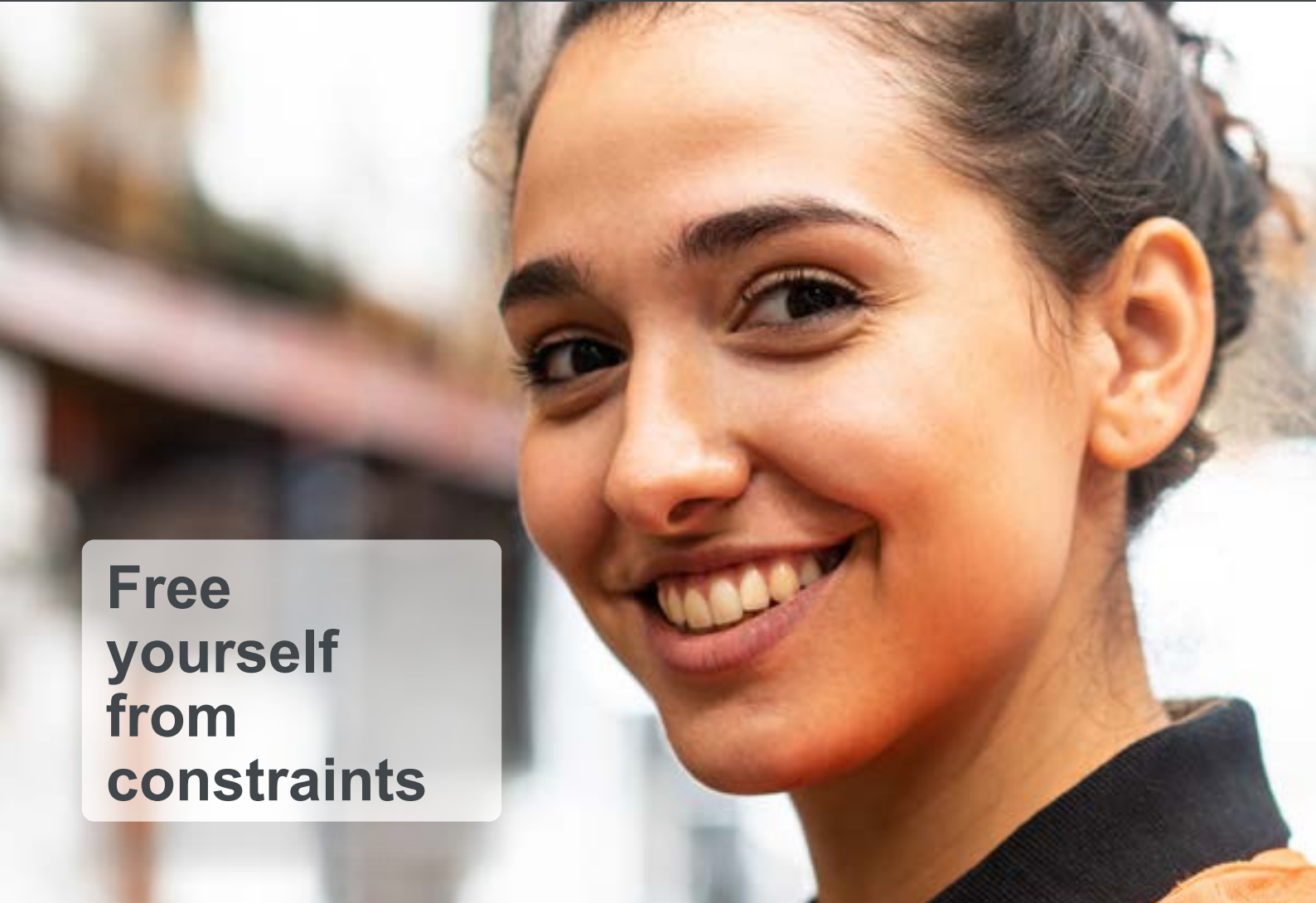
## Fully compatible



## Open architecture

Easily integrated into any software

Free yourself from constraints





# Beyond the details

Patients become more involved as they quickly understand the importance of the suggested treatment.

**Increase  
treatment  
acceptance**

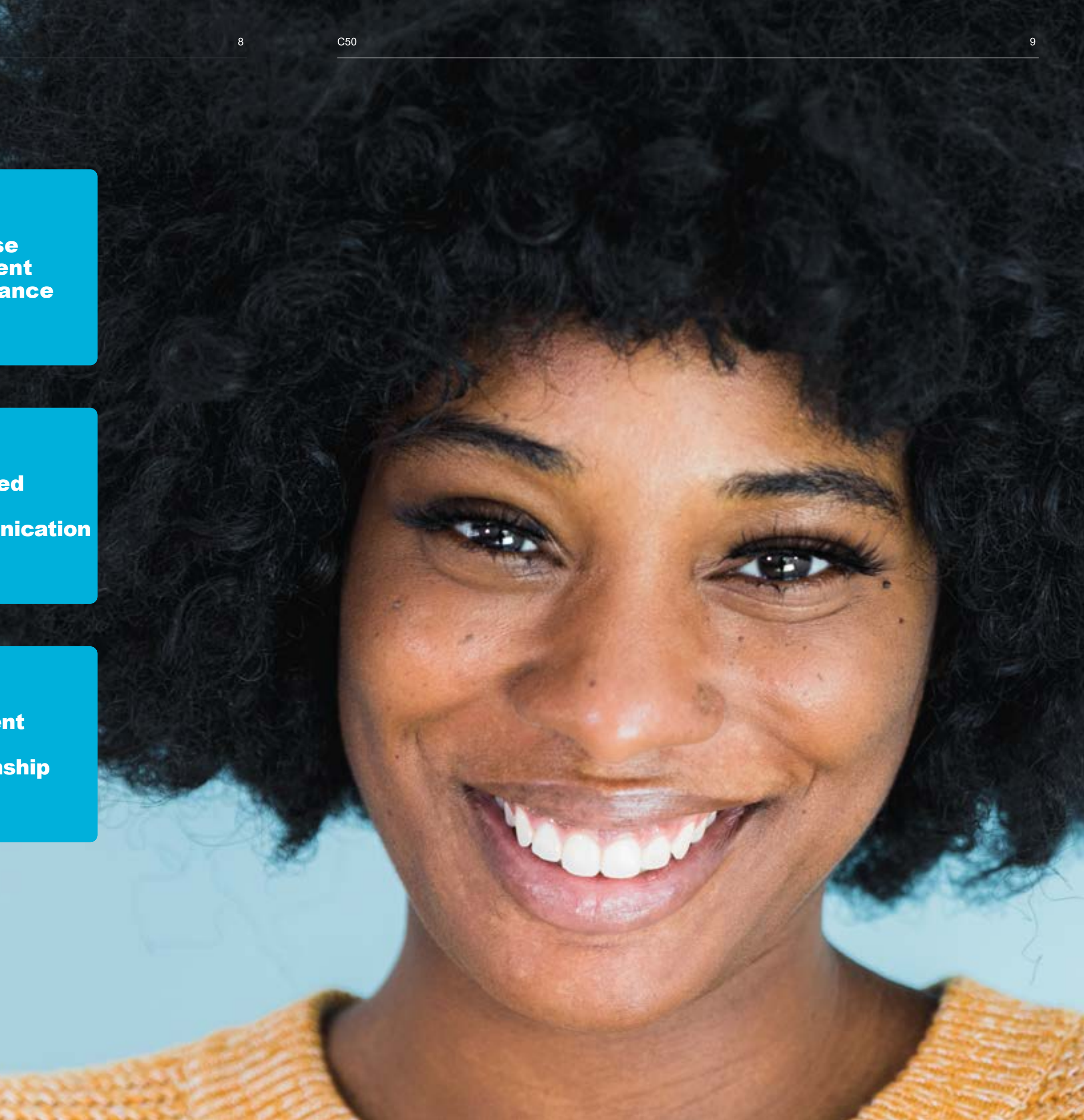
Highlight pathologies and explain clinical procedures easily. Facilitate dialogue to address objections and patient concerns.

**Improved  
patient  
communication**

Provide effective treatment planning by saving the images directly in the patient record. Easily compare images from previous patient visits and monitor progress.

**Confident  
patient  
relationship**

**Focus on what  
matters the  
most: Patients**







## Caries Detection workflow

Implement an efficient caries detection and treatment workflow helping you communicate more successfully with your patients and facilitate treatment



### Detect & diagnose

I see a large number of patients every day, so my practice requires that me and my team stays on top of its productivity.



**C50**

C50 intraoral camera is the perfect companion for non-invasive and reliable caries detection, thanks to its fluorescent technology



### Treat

I need to make my treatment as efficient and minimally invasive as possible for my patients.



**newtron**

With its controlled linear vibrations and frequency adjustment, Newtron® P5XS B.LED allows precise treatments and preserves tissues. It makes the treatment more comfortable for both the patient and yourself.



### Follow-up

I need to be able to do the proper follow-up on my procedures while minimizing the radiation exposure for my patients.



**x-mind  
unity**

**sopix  
plug-in**

I can provide the most complete follow-up at the lowest dose to my patients with X-Mind® unity, Sopix Plug-in and ACE technology



### Protect

I need to ensure optimal clinical protection for my patients and limit the risk of cross-contamination.



**riskontrol**

Riskontrol® disposable tips are a must-have solution to perform safe and clean dental care.

# Camera specifications

Sensor	CMOS
Resolution	1920 x 1080px
Sensitivity	2 lux
Frame per second (FPS)	25 – 30
Aspect ratio	16/9
Lighting	6 white LEDs and 2 blue LEDS
Focus adjustment	Automatic focus or Single focus
4 Visions mode	DAYLIGHT mode If option enabled: DAYLIGHT+ mode, PERIO mode and CARIES mode
Depth of field	From portrait to macro
Image capture	Capture button or footswitch (optional)
Angle of view	75°
Cable length	3m
USB output	3.0
Consumption	4.5W max
Handpiece dimensions	L: 200; W: 30; H: 24mm
Handpiece weight	100g
International Protection Marking (IP)	Dust & waterproofness protection IP53



dhpsupply.com | 800.626.2163

# Computer Configuration Requirements

Computer requirements	Specs
CPU	Intel Core i5 4 core 2GHz Gen 8 or greater and Apple M1 or greater
RAM	8GB
USB version	3.0 or greater
USB chipset	Intel or Renesas
Operating system	from Windows 10 PRO 64 bits or macOS Catalina

Class I medical device for dental care. CE. For professional dental use only.  
This medical device is not refunded by health insurance organizations. Read carefully the instructions before use.  
Manufacturer: Sopro® ACTEON® Group (France)  
Date of modification: March 2023





## **SOPRO**

A company of ACTEON® Group

**ZAC Athélia IV,  
avenue des Genévriers,  
13705 LA CIOTAT, France**

**Tel. +33 (0) 442 980 101**

**Fax. +33 (0) 442 717 690**

**[info@acteongroup.com](mailto:info@acteongroup.com)**

## **ACTEON North America**

A company of ACTEON® Group

**124 Gaither Drive Suite 124**

**Mt Laurel, NJ 08054**

**Tel. (800) 289-6367**

**[info.us@acteongroup.com](mailto:info.us@acteongroup.com)**

**Follow-us**

